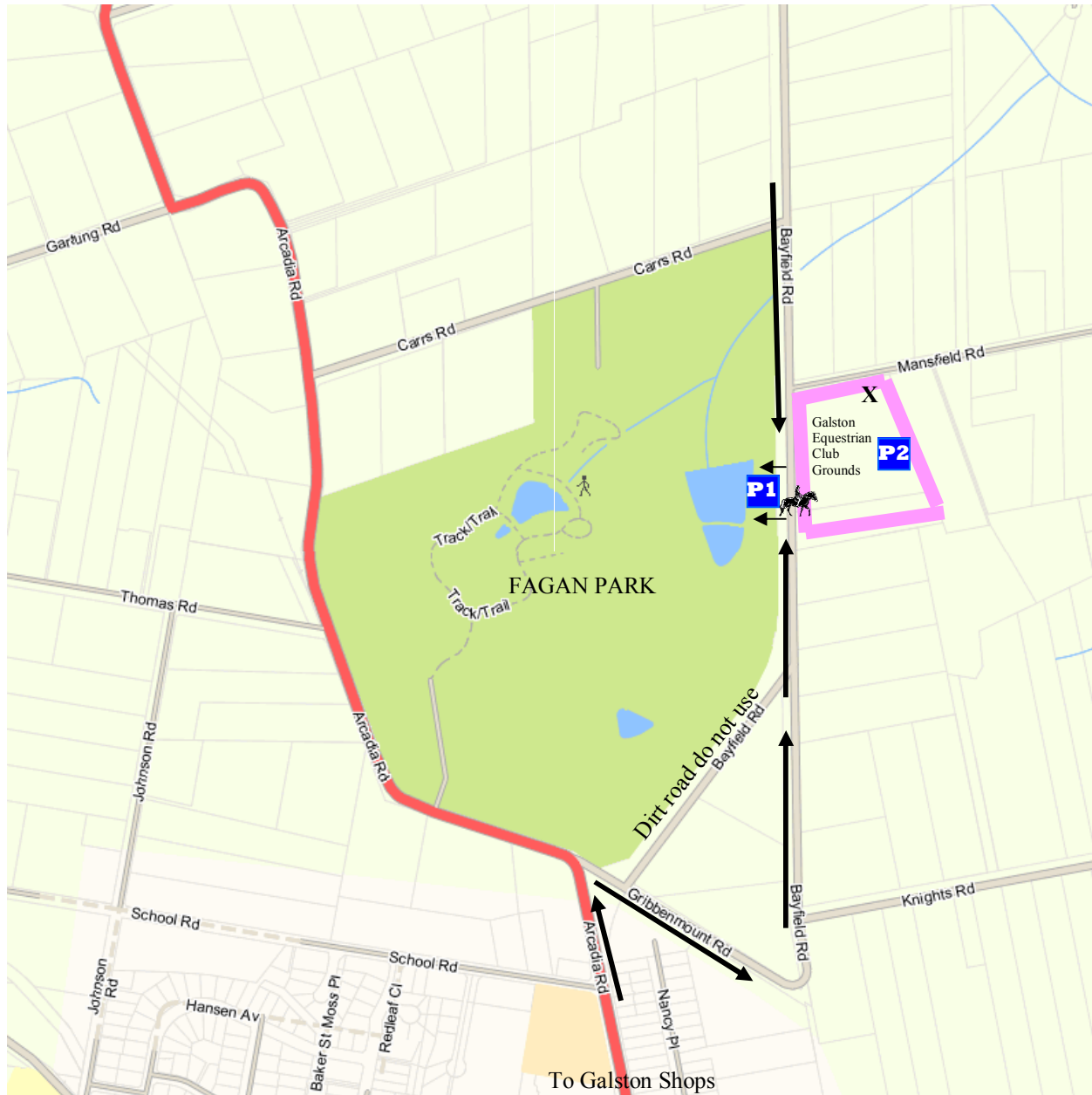







# Galston Equestrian Club - Event Map.

Map of Galston Area including the Rural Sports Facility—home to  
**Galston Equestrian Club**



- Key
-  Rural Sports Facility  
Galston Equestrian Club
  -  P1 Float Parking
  -  P2 Official Parking  
Judges and Volunteers only
  -  Horse crossing
  -  X Vehicular entrance for drop  
offs and officials only

A Canteen will be in operation offering a selection of food and drinks.

Wash bays are located on the grounds

Water will be available at the float parking P1 but will be limited— It is Highly recommended that you bring water for your horse.

Please note P1 parking is accessed from Bayfield Rd only— there is no vehicular entrance onto GEC grounds from Bayfield Road. The only Vehicular access onto grounds will be from Mansfield Road and will be for drop offs and Officials only.

The horse crossing will have access for horse and pedestrian traffic only directly onto grounds from Bayfield Rd.